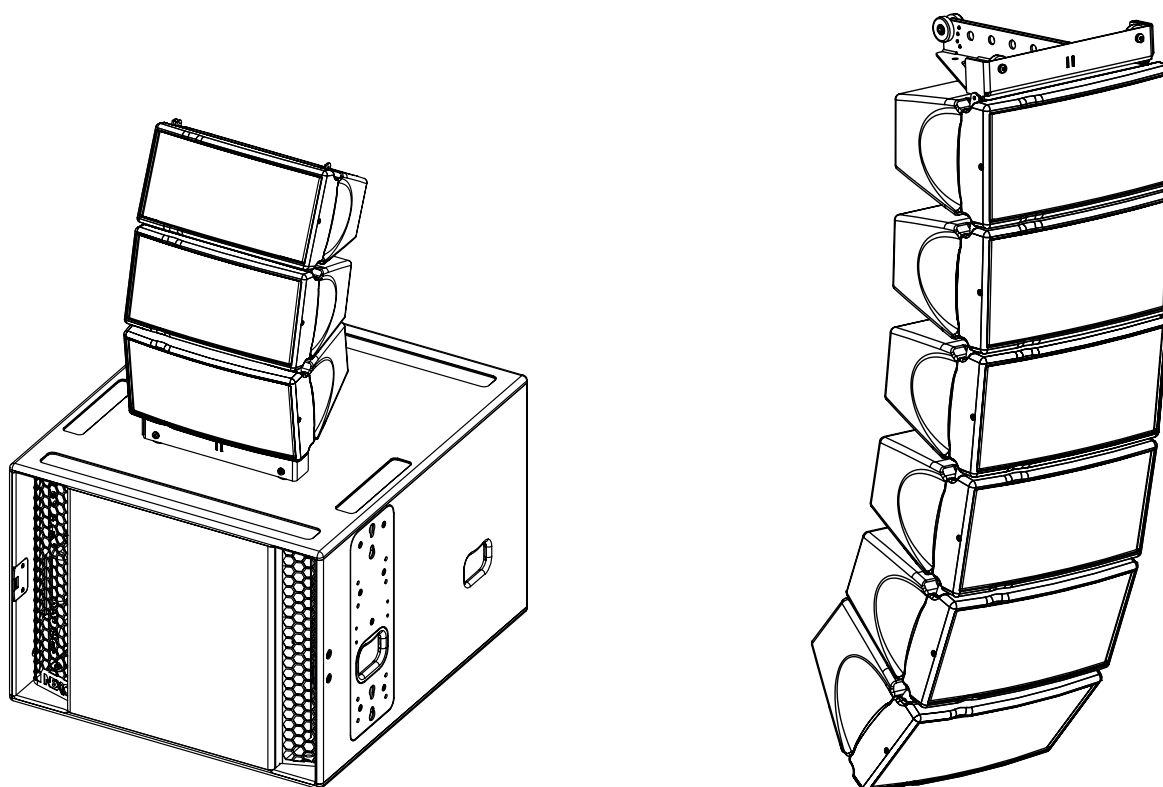
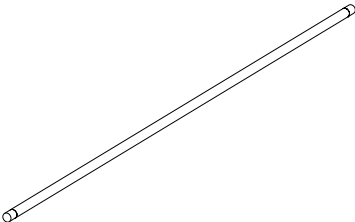
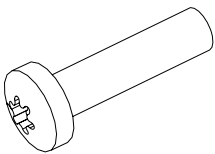
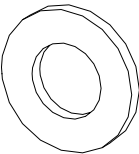
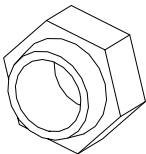


Rigging Fix GEOM6



Contents:

<p>X1</p> 	<p>X2</p> 	<p>X2</p> 	<p>X4</p> 
---	---	--	---

Weight: 0.2 kg / 0.44 lb

NEXO

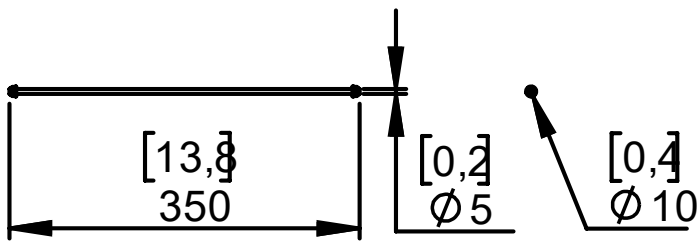
nexo-sa.com

ZA du Pre de la Dame Jeanne
60128 PLAILLY - France

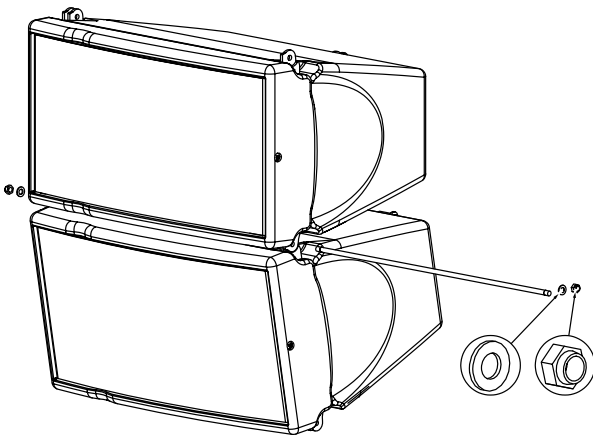
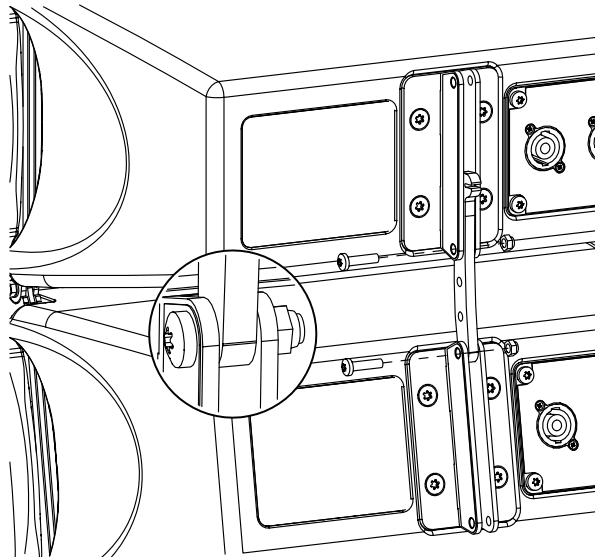
- Read this document before using.
- Keep this document.
- Observe all warnings and cautions.



Dimensions:



Use:

Front assembly	Rear assembly
Insert the axis trough front holes, insert the washers and secure axis with nuts.	Adjust at required inter-angle values, insert the screw and secure with the nut.
	

- NEXO cannot accept responsibility for accidents caused by any factor other than defects in this product itself.
- Please check the web site nexo-sa.com for the latest update.

NEXO

nexo-sa.com
ZA du Pre de la Dame Jeanne
60128 PLAILLY - France

- Read this document before using.
- Keep this document.
- Observe all warnings and cautions.

